

KTM TECHNICAL BULLETIN

December 20, 2001



TB 0232

Racing Four Stroke Auto-Decompression "Stop" Bolt and Nut.

During the scheduled maintenance and service intervals listed in the KTM Racing Four Stroke Owner's Handbook and the KTM Racing Four Stroke Shop Service Manual (i.e., 45 hours/26.4 gal./100liters of use) the lock nut (Illustration 2., Arrow) for the automatic decompression "stop bolt" should be checked for tightness.

Model year 2000 and 2001 KTM Racing Four Strokes (all models) have a Ny-lock nut (plastic thread locking insert) and it is recommended to replace this Ny-lock version (during normal service intervals), with the 2002 version "crimp" nut (Illustration 2., part number 0980 050003). Replacement of the original Allen head screw (Illustration 1., part number 0912 050106) with a new one should also be considered as a precautionary point. The nut and screw should always be assembled using "red" Loctite 243 (or stronger "green" Loctite 609) or similar securing compound.

The nut and screw should be checked for tightness and the Ny-lock nut replaced during the normal scheduled 45 hour/100liters of fuel (26.4 gal.) of use service interval. Failure to perform this check could cause sever engine damage from an incorrectly functioning auto-decompression mechanism or from the loose screw and nut inside of the engine!

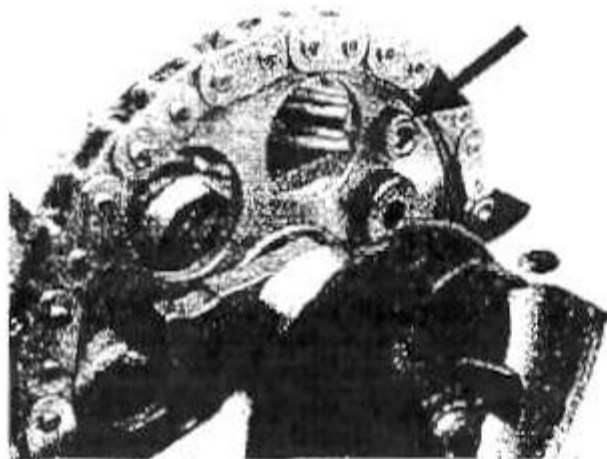


Illustration 1.



Illustration 2.

Specifications subject to change without notification.

KTM SPORTMOTORCYCLE USA, INC.

Technical Department